

GEOBIN[®]

COMPOSTING SYSTEM

Instructions

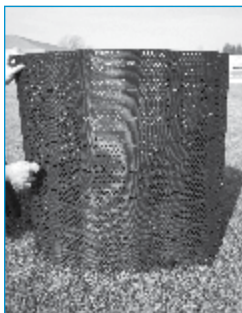


PLACEMENT OF YOUR GEOBIN[®] COMPOSTER

Place your GEOBIN on level ground that is exposed to plenty of sun and moisture. While moisture and sun are good, too much of either is not. Ideal composting is found through a balanced level of moisture and the highest aeration possible. Your GEOBIN composting system offers the highest passive aeration potential due to the numerous holes in the composter walls.

SETTING UP YOUR GEOBIN

1. Open your GEOBIN composter and expand it to the desired diameter (four foot maximum).

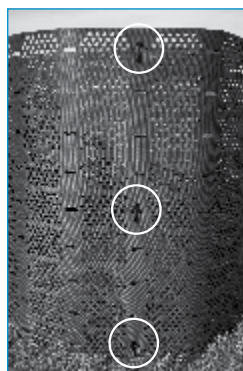


- Between 3 and 3-½ feet is typical for the average urban yard. As your needs grow, expand the width of your GEOBIN composter.
- You may wish to maintain at least seven inches of overlap on the GEOBIN composter (i.e., do not use the first set of slots to complete the circle, but rather the second set for the largest recommended diameter).
- Always keep the excess GEOBIN material on the outside of the GEOBIN composter so you don't catch the overlap material when you turn the compost.

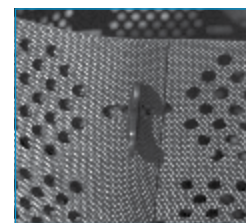
2. Connect and secure your GEOBIN composter.



- Insert the GEOBIN closure keys through overlapping slots, and turn 90 degrees to lock the keys.



- Place a closure key through the top-most, bottom-most, and center slots at your preferred GEOBIN diameter. Use the two additional keys to lock the remainder of the overlapping material. Place one key in the top-most and one in the bottom-most slot.



- Be sure to install the closure keys so that the larger key handle is on the outside of the GEOBIN composter. This allows for easy access to unlock the key when you desire to adjust the size.

3. Your GEOBIN composter is now ready to use!

OPTIONAL STAKING

If desired, you can use various staking options to secure your GEOBIN composter in place. For example, you can select long wooden stakes, plastic tent stakes, or landscaping staples.

Congratulations and thank you for purchasing the GEOBIN composting bin. You have chosen the leading compost bin that offers:

- the easiest set up
- the best adjustability—choose the capacity size that's right for you
- the fastest acting decomposition with the least amount of effort; numerous wall openings on the bin allow passive aeration
- the largest storage capacity

WHAT TO COMPOST

- Cardboard – including the GEOBIN box (shred first for best results)
- Kitchen scraps such as vegetables, egg shells, fruit peelings, and coffee grounds
- Garden and yard materials such as grass clippings, leaves, annual plants, and vegetables
- Wood ashes
- Manure from plant-eating animals only. NOT from household pets.
- Plants with disease or insect problems (compost only during summer months)
- DO NOT COMPOST: Bones, meat scraps, branches, twigs, or dairy

HOW TO COMPOST

- Alternate layers of organic waste, separating layers with ordinary non glossy newsprint
- Keep moist (not WET, but MOIST—like a squeezed out sponge)
- Turn every 4 to 6 weeks for proper aeration
- Add thin layers of soil to improve the process

WHEN THE COMPOST IS READY (TYPICALLY TAKES ABOUT 2 MONTHS)

- Compost is dark in color
- Smells earthy and rich

IMPROVING YOUR COMPOST

- Compost has an “off” odor
 - Add coarse, brown materials to absorb moisture
 - Turn pile to aerate
 - Maintain moisture to that of a squeezed out sponge
- Compost has an ammonia smell
 - Reduce percentage of grass clippings (nitrogen)
 - Add carbon rich materials such as leaves, straw, or shredded paper
- Compost is damp and sweet smelling but is not heating up
 - Increase percentage of nitrogen materials (grass clippings, fresh manure, or high nitrogen fertilizers)
- Compost is dry on the outside but warm and moist on the inside
 - Compost pile may be too small, add more material and turn the pile
 - If center is dry, add moisture while turning

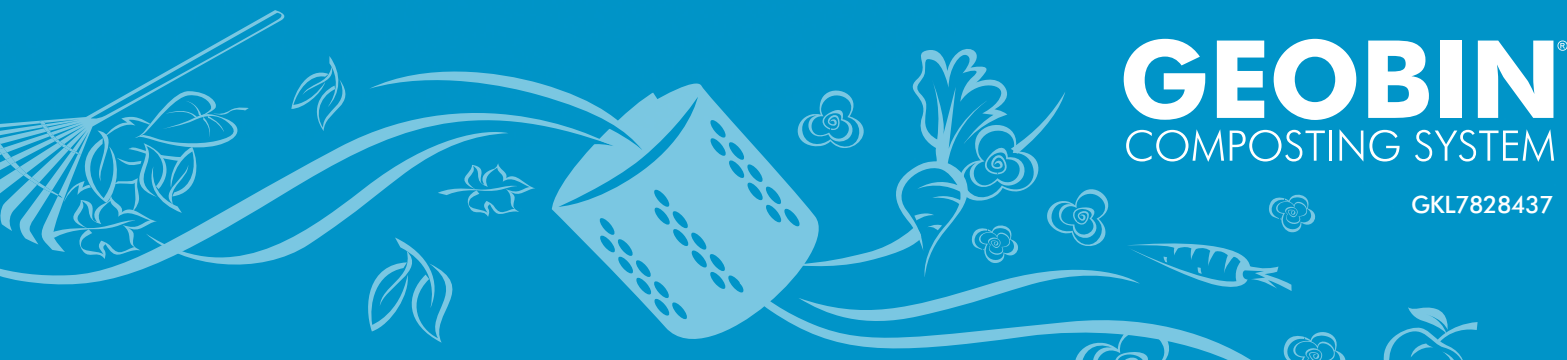
CREATE RICH, NOURISHING COMPOST

You’ve already made the decision to do the right thing by composting. Composting saves money through reduced leaf bag expense and reduction in fuel costs for hauling leaf and grass clippings. You’ll produce your own compost and use it to grow world-class plants, flowers, and vegetables in your garden. You’ll also be doing your part to keep materials out of our landfills and reducing impacts to our Earth.

At www.GEOBIN123.com you’ll find information about composting: composting tips, FAQs, useful links to composting sites, and opportunities to purchase accessories to assist in your composting efforts. If you have any questions or comments after checking our website, contact us at 1-800-781-4321.

For more information, visit
www.GEOBIN123.com

GEOBIN® is a registered trademark
of Presto Products Company.
Apr-2012



GEOBIN[®]
COMPOSTING SYSTEM

GKL7828437